

**Jake & Elwood**

**PRODUCTI  
ON RIDER  
2011**



**Production Manager**

Jake blues

Mobile:-07791 858029

Email: - jolietja@aol.com”

**General Information**

Herein you will find details of all technical and production details for the Jake and Elwood show visiting your venue. Please read this document thoroughly. We ask that any issues or additional costs be raised with us at least four (4) weeks prior to our visit in order that they can be agreed.

**Show Format**

The Jake and Elwood show is a two 2 part show. The first half has a running time of approximately forty five (45) minutes, second half running times is approximately fifty (50) minutes.



Interval should be no longer than twenty (20) minutes in length.

### **Load In and Out Local Crew Requirement**

The Jake and Elwood show require a minimum of two (2) local crew for the load in and load out. This cost should be included in the contract.

**NOTE:** We will not pay for additional crew. If this is an issue with your venue then please contact our production manager no later than four (4) weeks in advance of the show.

### **Load In**

**Load in shall be 2 pm (1400 hrs) prompt.**

### **Parking and Access Requirements**

We will require clear access to parking for our production vehicles. Please ensure any permits required from local authorities are applied for and secured in good time. Clear access and a reasonable distance of twenty (20) feet should be available to the venues dock doors.



Our vehicles are one (1) 40 ft tour bus with a 12 ft trailer.plus 7.5 ton truck for p/a In addition, we will require two (3) parking spaces for cars.

NOTE: Please advise us of any issues regarding parking and access no later than four (4) weeks in advance of the show.

### **Touring Party**

There are eleven (11) band members  
There are four (4) crew members

### **Sound Check**

Our standard schedule is for sound check to take place between 5.30-6.00pm. If there are any issues relating to sound check, such as noise restrictions, please notify our production manager in good time.

---

---

## **Venue Responsibilities**

### **Dressing Rooms**

Please provide a minimum of four (4) lockable dressing rooms as near to the stage as possible. If more rooms are available then that would be great!

### **Merchandising and Show Programmes**



Please provide a prominent area at front of house for merchandising. We will provide a member of our team who will sell merchandising.

We will require the venue to provide a minimum of one (1) members of your front of house team to sell programmes on our behalf.

### **Technical Team**

In addition to two (2) load in and load out crew, the theatre shall be responsible for providing one (1) competent lighting operator and two (2) competent follow spot operators. In addition, at least one member of the theatre technical team shall have access to and be competent with the theatres power system.

### **Stage**

Wherever possible we require a clear stage with a minimum width of 30 feet and a minimum depth of 25 feet. We require a LX bar as close to the rear of the stage as



possible. This bar should be able to accommodate a 40 feet wide back drop with a hanging depth of 20 feet.

**NOTE:** If your stage is of smaller dimension then please contact our production manager no later than four (4) weeks advance of the show. We are able to reduce the size of our stage set where absolutely necessary.

### **Stage Power**

We require the venue to provide three (3) drops of 16 amp power for backline. This must be on a clean feed and preferably on the same power supply as sound. We tour breakout boxes for backline power.

### **Tabs**

We will use house tabs for the show. If your theatre does not have house tabs please notify us in good time if you do not have house tabs in order that we can be aware of any changes we need to make to the format of the show.

---

## **Lighting**

### **Touring LX**

We tour one (1) power hazer, One (1) strobe, one (1) JEM fogger and for Christmas shows we tour one (1) snow machine.

### **Venue LX Requirement**

We will require your lighting technician to operate and programme the show. We use standard colours which



include blue, red, green and amber. Our LX design uses these colours to provide both over head and FOH washes.

Wherever possible, we would appreciate the use of any intelligent lights you may have. In general, we require eight (8) specials for the band and in addition we would expect your lighting technician to programme standard effects with these lights!!

We will require eight (8) floor cans with Congo blue gel wherever possible.

Our back drop will require lighting and wherever possible please light this with a four colour wash in blue, red, green and amber.

**Risers:** if possible this show will require 3 risers approx 8 ft x 8ft this for band only if these risers could be on stage Before show arrives please

As earlier mentioned, we will require two (2) follow spots.

Our stage manager will call the show and call all spot cues.

## Sound

### Sound and Lighting

**NOTE: The Jake and Elwood show tour full sound system.**

**But do not tour lighting and will therefore require use of the venues installed lighting, and sound systems if needed.**



**SOUND**

**P.A./ ENGINEER PROVIDED BY SHOW**

**8K RIG Draws 20amps. Connection one 32 amp single phase (blue) connector (recommended) all at stage end (or 63amp connector.**

**Backline requirements 13 amp supply on stage for band amplifiers.**

**Sound Channel List**

| <b>Channel</b> | <b>Assign</b> | <b>DCA/Group</b> | <b>Insert</b> | <b>Mic</b> |
|----------------|---------------|------------------|---------------|------------|
| 1              | Kick          | 1                | Gate          | AKG D112   |
| 2              | Snare         | 1                | Gate          | SM57       |
| 3              | Hats          | 1                |               | AKG C451   |
| 4              | Tom 1         | 2                | Gate          | SM98       |
| 5              | Tom 2         | 2                | Gate          | SM98       |
| 6              | Floor         | 2                | Gate          | SM98       |
| 7              | Overheads     | 2                |               | AKG C451   |

# Jake & Elwood

|    |              |   |  |       |
|----|--------------|---|--|-------|
| 8  | Bass         | 3 |  | DI    |
| 9  | Guitar Left  | 4 |  | SM57  |
| 10 | Guitar Right | 4 |  | DI    |
| 11 | Acoustic     | 4 |  | DI    |
| 12 | Rhodes       | 5 |  | DI    |
| 13 | Keys         | 5 |  | DI    |
| 14 | Leslie Lo    | 5 |  | MD421 |
| 15 | Leslie Hi    | 5 |  | SM57  |
| 16 | Trumpet      | 6 |  | DI    |
| 17 | Sax          | 6 |  | DI    |
| 18 | Harmonica    | 6 |  | SM57  |
| 19 | BV 1         | 7 |  | Radio |
| 20 | BV 2         | 7 |  | SM58  |
| 21 | BV 3         | 7 |  | Radio |
| 22 | jakel        | 8 |  | SM58  |
| 23 | elwood       | 8 |  | SM58  |

|    |            |     |  |  |
|----|------------|-----|--|--|
| 25 | FX 1 Left  | LCR |  |  |
| 26 | FX 1 Right | LCR |  |  |
| 27 | FX 2 Left  | LCR |  |  |
| 28 | FX 2 Right | LCR |  |  |
| 29 | CD Left    | LCR |  |  |
| 30 | CD Right   | LCR |  |  |

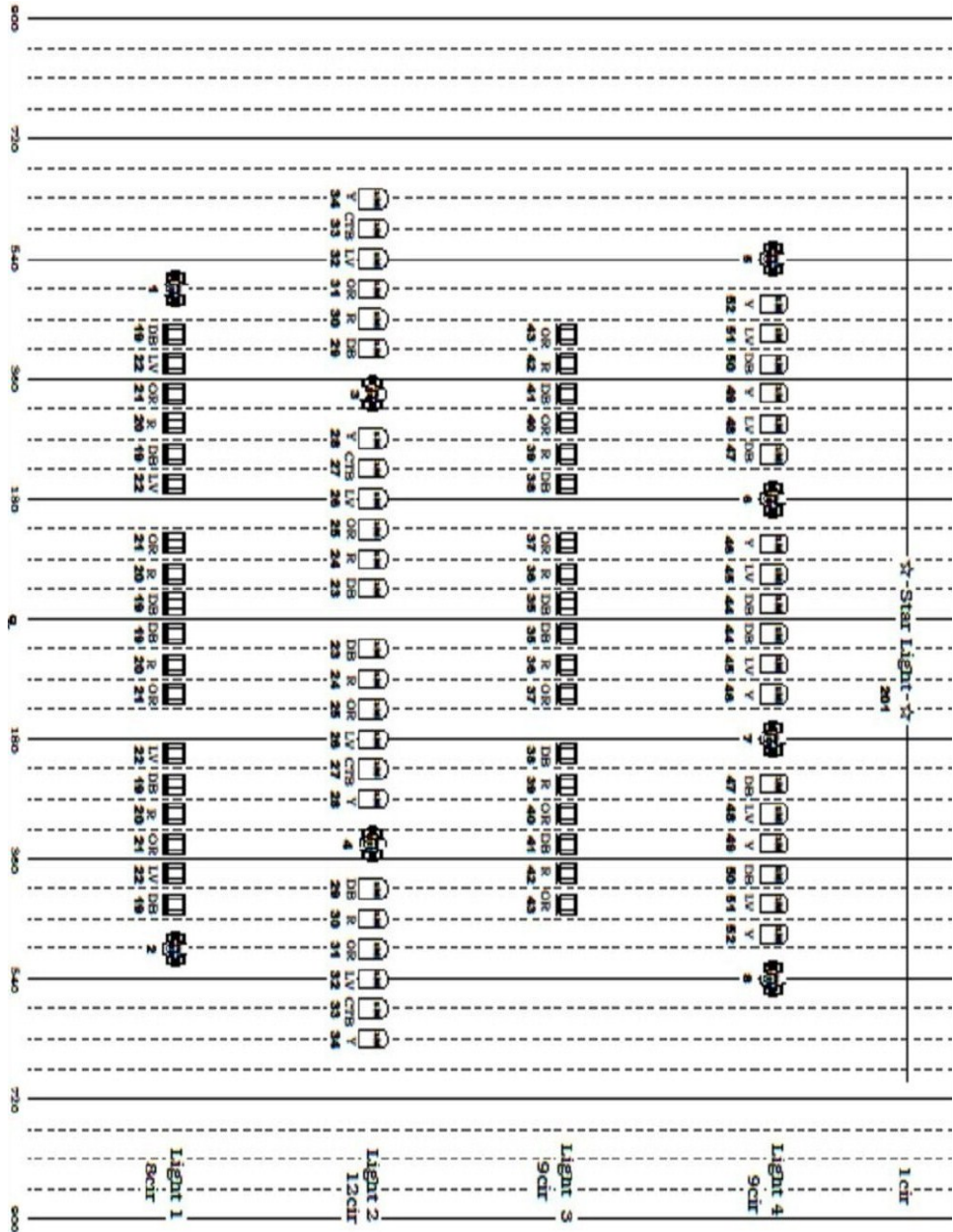
| Aux Send | Assign     | Monitors   | Effects |  |
|----------|------------|------------|---------|--|
| 1        | Drums      | Wedge      |         |  |
| 2        | Bass & Gtr | 2 x Wedges |         |  |
| 3        | Keys       | Wedge      |         |  |
| 4        | Brass      | Wedge      |         |  |
| 5        | BV's       | Wedge      |         |  |
| 6        | Bill       | Wedge      |         |  |



|   |      |       |     |  |
|---|------|-------|-----|--|
|   | Mark | Wedge |     |  |
|   | FX 1 |       |     |  |
| 9 | FX 2 |       | DDL |  |

**Guide Line LX Plot**

# Jake & Elwood





# RISK ASSESSMENT

PREPARED BY MR. J. BLUES.

Description of Task/Activity

Jake and Elwood the best blues brothers show in the world ever!!!

Date

Area :- on stage

venue →

| IDENTIFY who may be affected   |               | RISK                |             |        | CONTROL MEASURES     |        |        |        |   |
|--|---------------|---------------------|-------------|--------|----------------------|--------|--------|--------|---|
| HAZARDS  | Theatre Staff | Producers Employees | Contractors | Public | TYPE OF HARM         | Hazard | Likely | Factor |   |
| Audience member going on to the stage from the auditorium                |               |                     |             | N      |                      |        |        |        |   |
| Spraying beer on stage over Jake Blues                                   |               |                     | Y           |        | Slip or Trip Injury  |        | L      |        | This has been rehearsed and performed many times and the cast have towels to dry themselves with on stage |
| Jake Blues uses a bull whip to take an unit cigaret out of Elwoods mouth |               |                     | Y           |        | Whiplash of the face |        | L      |        | This has been rehearsed and is very unlikely to happen  |

| ASSESSMENT Accepted by | Signature | Date | Review required if:  | 3. Following Accident or incident |
|------------------------|-----------|------|--|-----------------------------------|
| Company Manager        |           |      | 1. Reason to suspect this is no longer valid                       |                                   |
| Senior Technician      |           |      | 2. There has been significant change<br>i.e. Change in set or show |                                   |





Thank-you!